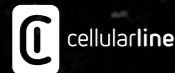
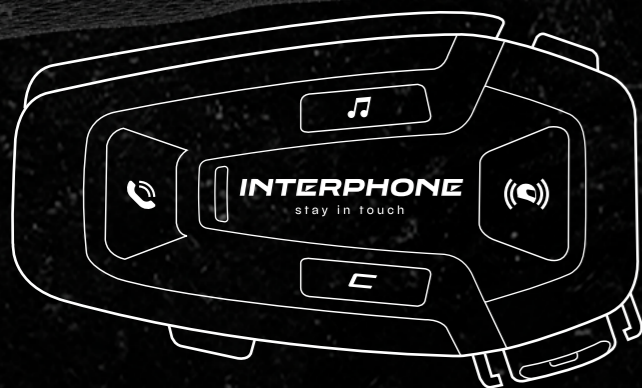
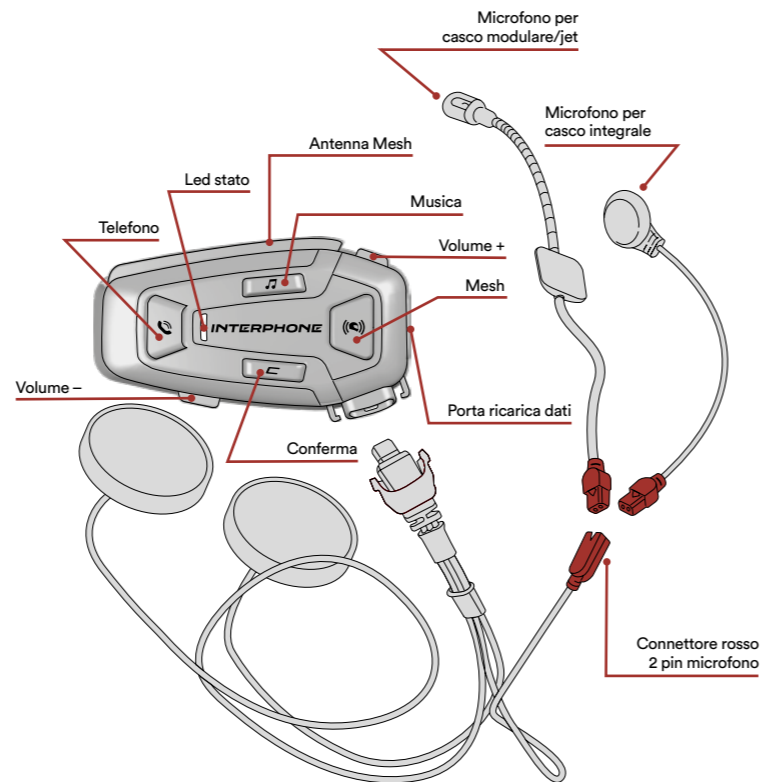


# U-COM BR

## Guida rapida



### Panoramica del sistema

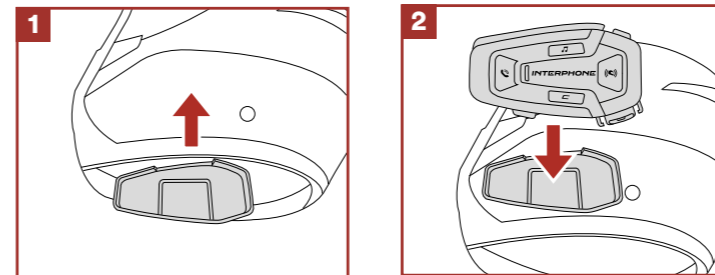


VERIFICARE LA PRESENZA DI AGGIORNAMENTI SOFTWARE SUL SITO [www.interphone.com](http://www.interphone.com)

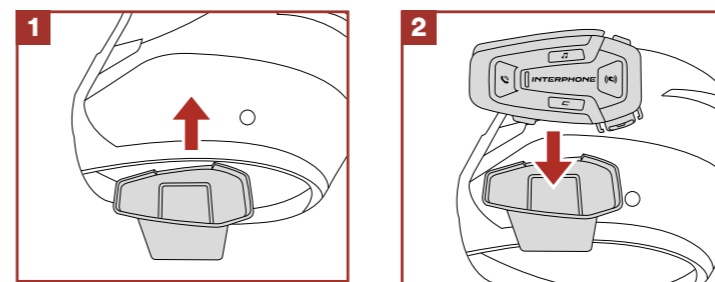
**Cellularline** S.p.A.  
Via Lambrakis 1/A, 42122 Reggio Emilia, Italy  
[www.cellularline.com](http://www.cellularline.com)

### Installazione

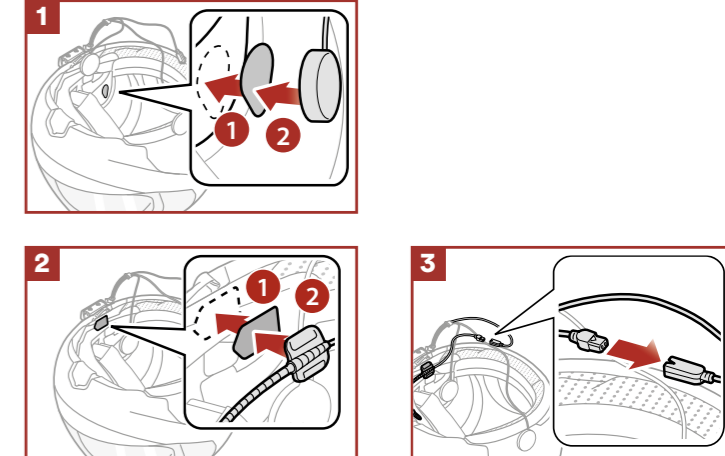
#### Utilizzo/applicazione con bi-adesivo nel supporto



#### Utilizzo/applicazione con staffa a clip dell'unità principale

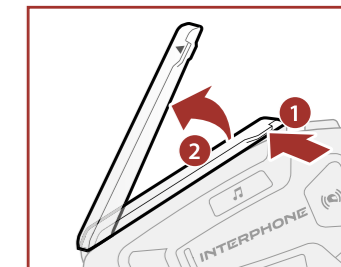


#### Installazione degli auricolari e del microfono



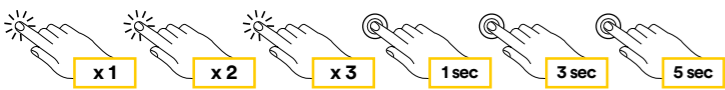
#### Antenna Mesh Intercom

Spingere leggermente l'antenna Mesh Intercom verso l'interno per aprirla.

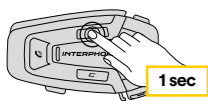


## Legenda e funzioni base

Premere una volta    Premere due volte rapidamente    Premere tre volte rapidamente    Premere per un secondo    Premere per tre secondi    Premere per cinque secondi



### Accensione



### Spegnimento



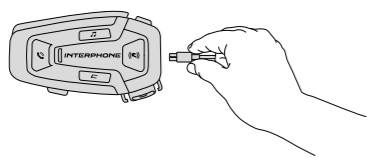
### Alzare il volume



### Abbassare il volume

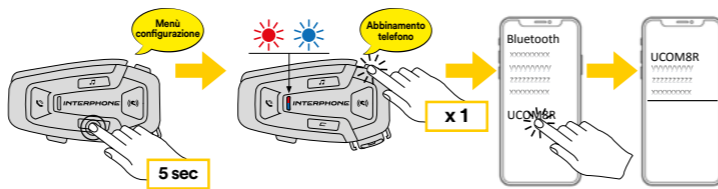


### Ricarica

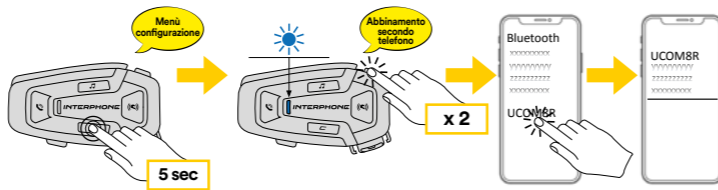


## Abbinamento dispositivi Bluetooth®

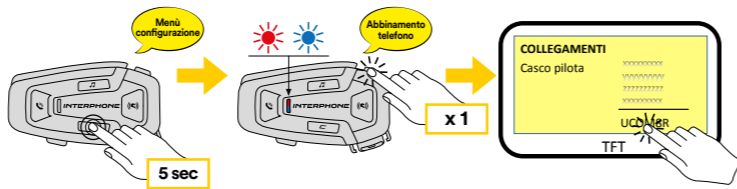
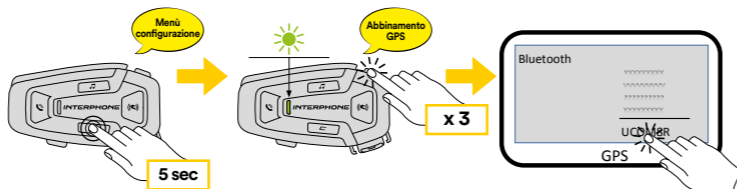
### Abbinamento telefono principale (da eseguire a centralina accesa)



### Abbinamento secondo telefono (da eseguire a centralina accesa)

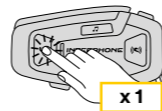


### Abbinamento GPS - TFT (da eseguire a centralina accesa)

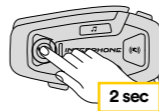


## Telefono

### Rispondere alla chiamata



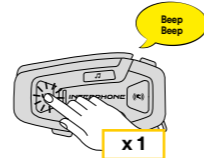
### Terminare la telefonata



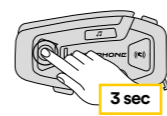
### Rifiutare la telefonata



### Assistente vocale

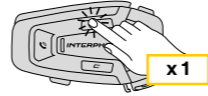


### Speed dial

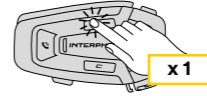


## Musica

### Musica play



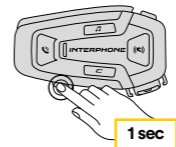
### Musica pausa



### Traccia avanti

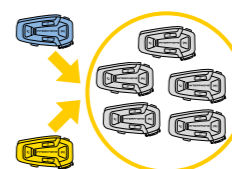


### Traccia indietro

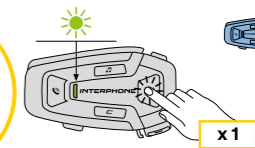


## Mesh Intercom - OPEN MESH

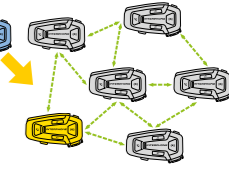
### Modalità OPEN MESH (predefinita)



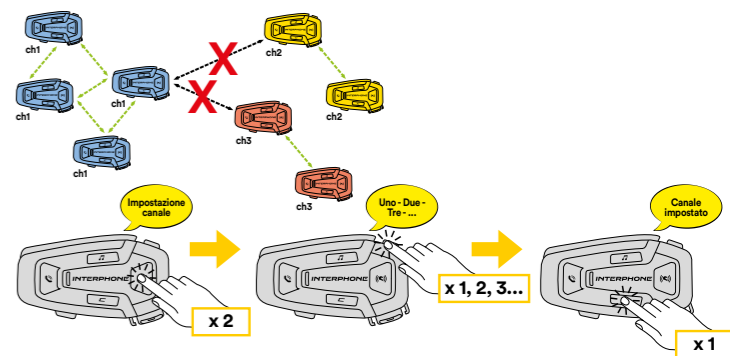
### Avviare/interrumere intercom OPEN MESH



### Connessione intercom OPEN MESH



### Cambiare canale intercom OPEN MESH (1 > 2 > 3 > 4 > 5 > 6 > 7 > 8 > 9 > Esci > 1 > 2 > ...)



## Mesh Intercom - GROUP MESH

### Modalità GROUP MESH

